

Харов Денис

Kharov Denis

Up

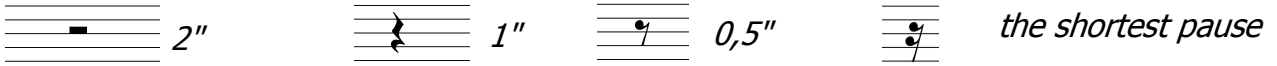
Вверх

Для трубы in B

2011

Legend

Each of beam groups is played as fast as possible (the lengths of rhythmic figures are correlated with each other). Every pause in the piece has its certain time interval:



Comma (pause) means the mechanical stop of any action



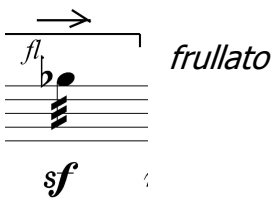
Arrows show the direction of the bell while playing



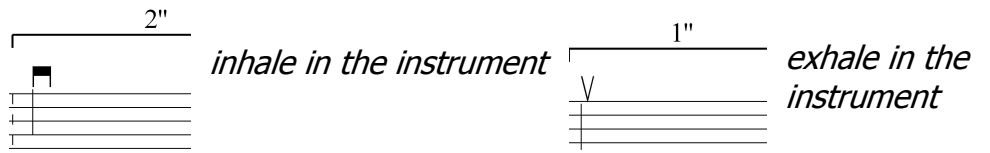
extremely high sound

normal position of the bell

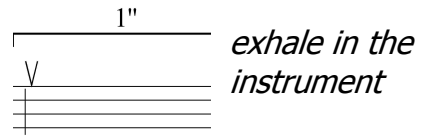
sf



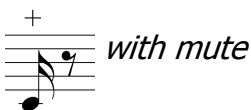
sf



inhale in the instrument



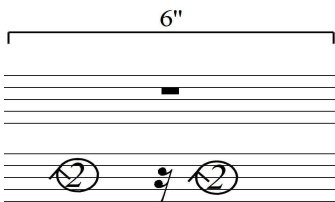
exhale in the instrument



with mute



without mute



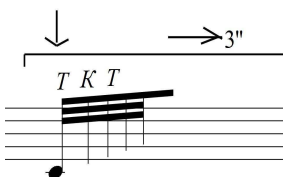
Circular rotation of the mute in the bell is used to make the squeak. The number in the circle shows the length of the rotation (in seconds). Metallic mute should be used for creating the required effect.



p

sf

The line shows the duration of the first note. The note with the sharp accent interrupts it and then the sound of the first note should be continued.



to play any notes with double tongue as fast as possible in the indicated direction according to the marked notes.



Presto possibile

1

sf pp *sf*

2

pp *sf* *pp* *sf*

3

p *fp* *fp* *sf*

5

mf *p* *f* *fl.*

7

p *sf* *p* *fp* *sp* *mf* *sf* *sf*

9 5"
p *fp* *f* *p*

10 4" 6"
p

11 5" →
sf *p* *sf* *p*

12 8"
p *sf* *p* *sf* *p* *mf*

13 5" 3"
sf *pp* *sf* *pp* *sf* *mf* *sf*

15 5"
mf *sf* *sf* *f*

16 \rightarrow 2" 10" \uparrow \downarrow

mf *sf* *f* *sffz* *sf* *mf*

17 \rightarrow 4" \downarrow 2"

f *p* *fp* *pp* *sfz*

19 \uparrow \rightarrow 6" 5" \downarrow

sf *p* *f* *fff* *sffz*

21 \downarrow 8" \rightarrow 5" \downarrow

pp

23 8" \uparrow 3" \downarrow

fp *p* *sf* *f*

25 \uparrow \downarrow \uparrow \downarrow \uparrow 8" \rightarrow \downarrow

sfz *p* *sf* *mf*

27 4"

28 3"

f

29 6" 2"

ff \langle *p* \rangle *fp* \langle *f* \rangle *f* \langle *p* \rangle

31 6" 2"

p \langle *fp* \rangle *f* \langle *ff* \rangle *f* \langle *p* \rangle

33 6" 1" 1" con sord.

sf \rangle *p* \langle *f* \rangle *pf* \rangle *p* \langle

37 8" 2" 5" 3" sord.

p *p* \langle *f* \rangle *p* \langle *pp* \rangle *p* \langle *f* \rangle

sord.

57 *f* *sfz*

58 *p* *sf* *sf* *pp*

62 *fff*

65 *ppp*

67 *f ppp* *sf*

71 *pp* *gliss*
senza sord.

73 *T K T K T*
p *f* *pp* *f* *pp*
4" 4" 3"

76 *sf* *p* *f* *ff*
3" 4" 4" 3"

80 2" 5"

82 *gliss.* *fff* *fl.* 5 3 5

84 *fl.* 5 8 8 6 5 5

86 *fl.* *T K T K T* *final*
3"